

**ritter**  
made in Germany

*... at home in any kitchen*



**Built-in Systems**



## Built-in range



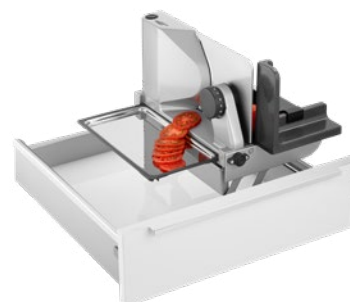
BVC 10



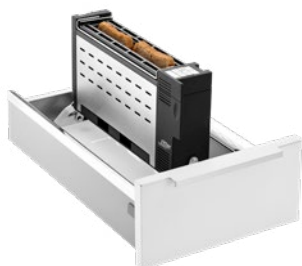
BFS 62 SR



BHB 50

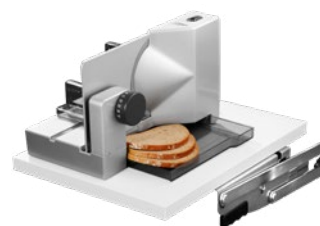


BFS 72 SR



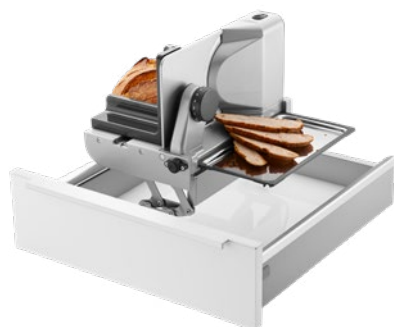
BT 10

E 118<sup>Einbau</sup>



BFS 52 S

EBT



BFS 62 SL

Built-in vacuum cleaner **BVC 10**





For installation in almost every furniture front panel, can be retrofitted

Practically stowed and still always ready to use

Alternative to the awkward conventional vacuum cleaner



The built-in vacuum cleaner is activated simply by tapping the button with your foot or a brush

Accumulated dirt is swept in front of the suction slot and removed in seconds



Uses conventional Swirl® vacuum cleaner bags with anti-allergen filters

Bags are easy to change



Available as optional accessory:  
Set of tube, push-in nozzle, crevice nozzle and brush attachment



Built-in hand blender **BHB 50**





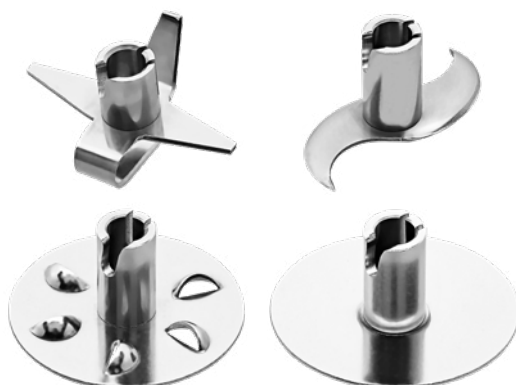
Charging station is firmly mounted in the drawer and can be removed toolless

The hand blender is always ready to hand and its battery always charged because of the intelligent charging technology



Cordless for greatest possible free movement when cooking

Three speed settings



Various options for food preparation because of four different attachments

Built-in toaster **BT 10**

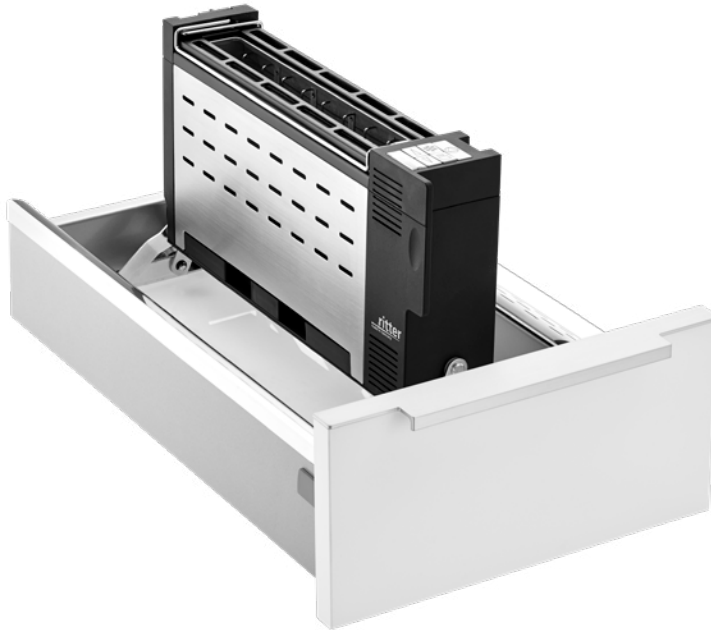




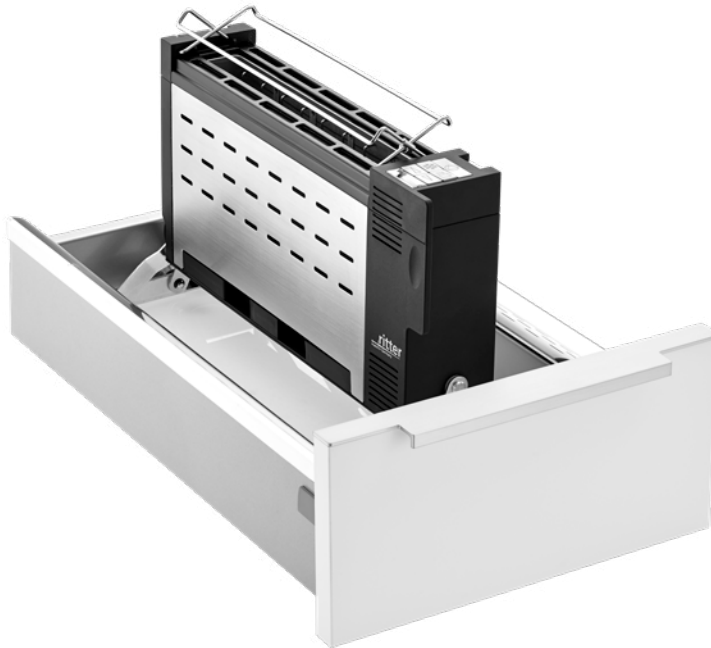


[www.blauer-engel.de/uz167](http://www.blauer-engel.de/uz167)

- low energy consumption
- low level of harmful materials
- safe



Safe toasting in the drawer thanks to thermal insulated housing



Memory function, bread and roll rack and crumb tray



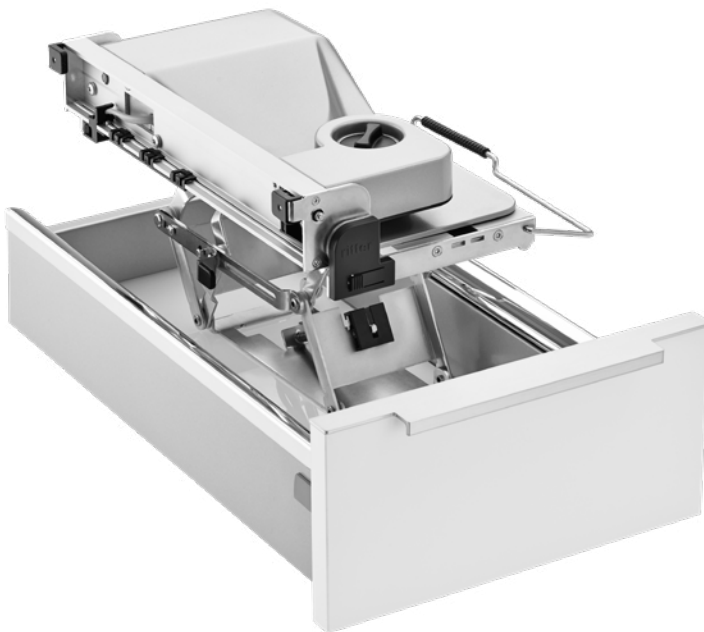
Automatic switch-off function for safety when toaster is being folded

Built-in food slicer **BFS 52 S**





Right-handed operated



Quick collapsing in two steps



Compact food slicer for small drawers

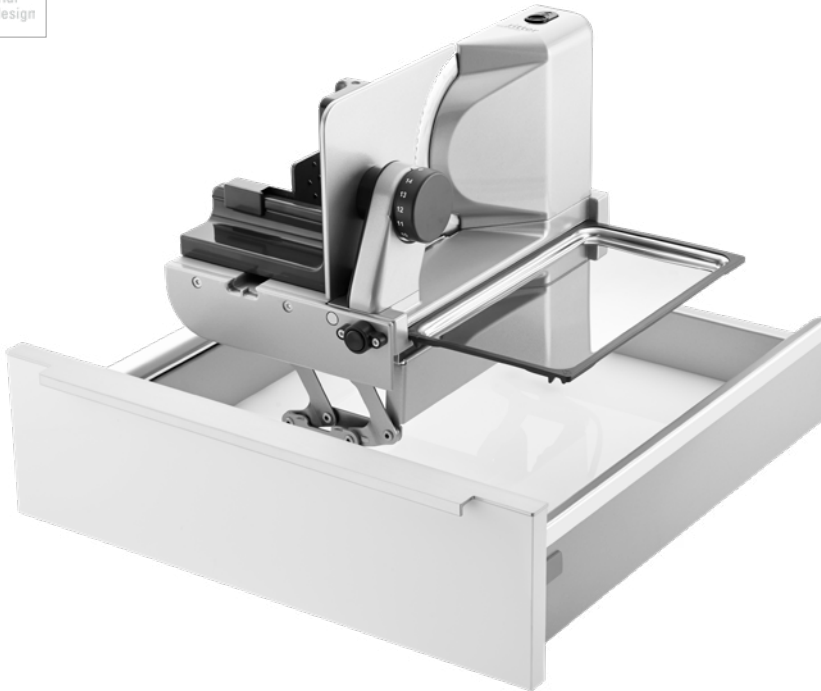


Built-in food slicer **BFS 62 SL**





## Design Award



Left-handed operated



Comfortable operation by simply folding in and out

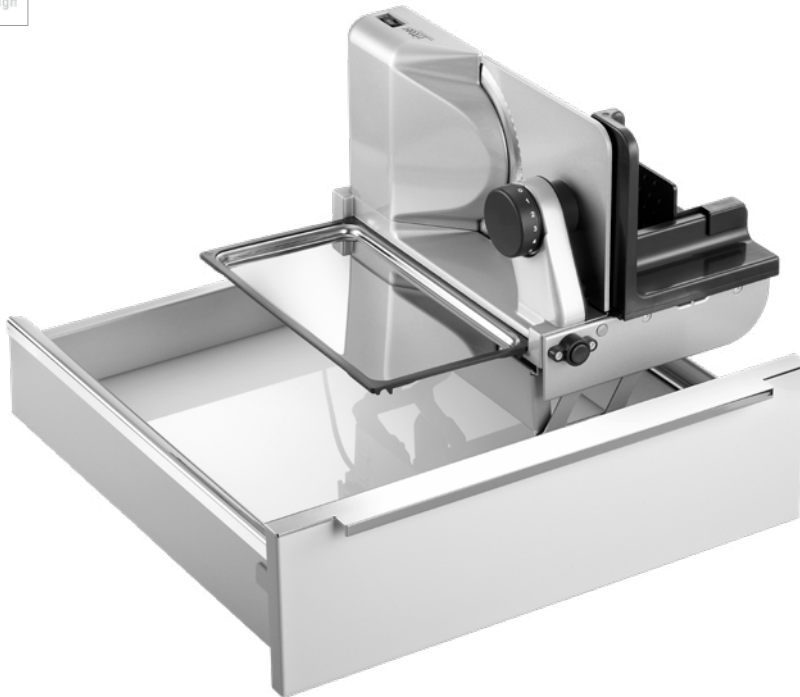


Built-in food slicer – perfect solution to keep the worktop tidy

Built-in food slicer **BFS 62 SR**



## Design Award



Right-handed operated



Comfortable operation by simply folding in and out

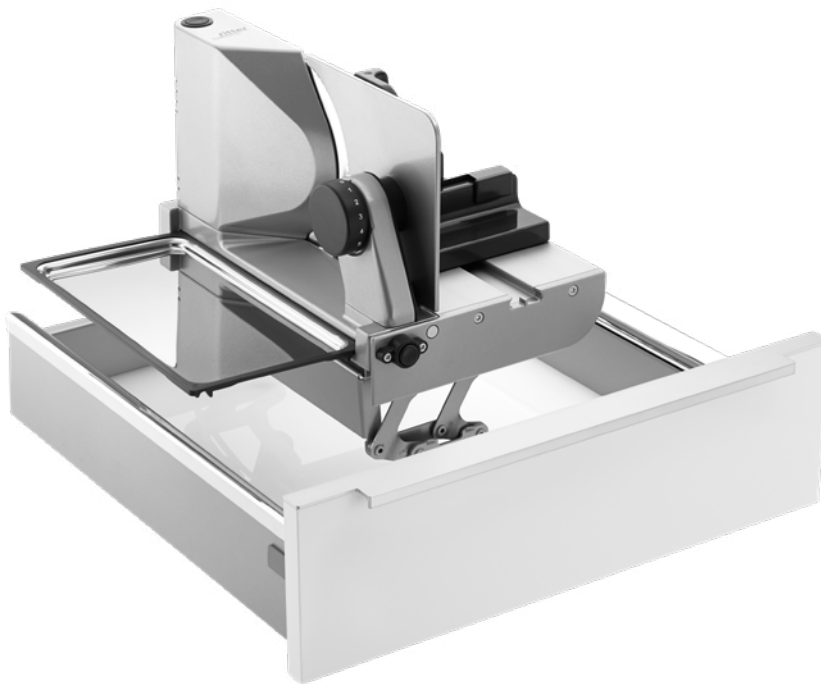


Built-in food slicer – perfect solution to keep the worktop tidy

Built-in food slicer **BFS 72 SR**







Maximum stability and optimal slicing results thanks to high-quality full metal construction

Right-handed operated



Increased safety thanks to two-finger switch-on system

Easy toolless blade removal thanks to bayonet quick-acting lock

Precise slicing results thanks to blade with electropolished surface

Built-in food slicer **E 118** Einbau





Built-in food slicer for installation in  
swivel mechanism

Left-handed operated



Stowed away in floor cabinet after  
use



Built-in bread bin **EBT**







Built-in ceramic bread bin keeps bread fresh longer

Preserving lid provides constant humidity

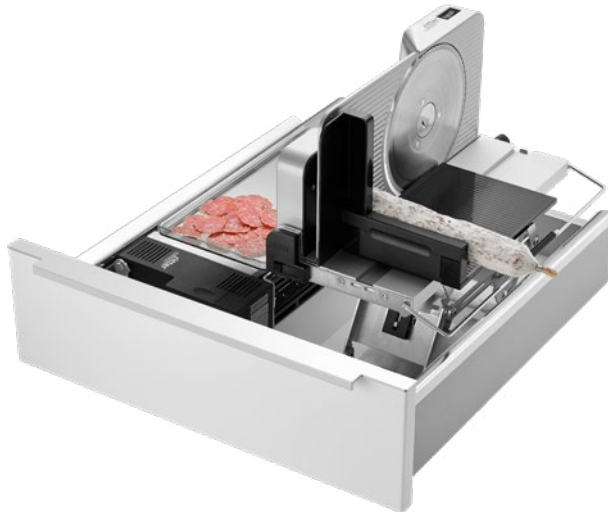


Built-in bread bin opens automatically when the drawer is pulled out

# Built-in combinations



## Examples for Built-in combinations



### **BT 10 + BFS 52 S**

Built-in toaster BT 10 and built-in food slicer BFS 52 S can be combined in drawers 50 cm wide

Useful built-in combination to save drawer space



### **BT 10 + BFS 72 SR**

Built-in toaster BT 10 and built-in food slicer BFS 72 SR can be combined in drawers 80 cm wide

Space-saving built-in combination with two built-in devices stowed away close at hand in one drawer



### **BFS 62 SL + BVC 10 + optional accessory**

Built-in food slicer BFS 62 SL and built-in vacuum cleaner BVC 10 with optional accessory

Practical built-in combination which keeps the drawer clean

## Built-in vacuum cleaner **BVC 10**

product	colour	dimensions	weight	item no.
BVC 10	stainless steel/black	h: 105 mm w: 365 mm d: 425 mm	6 kg	940.010

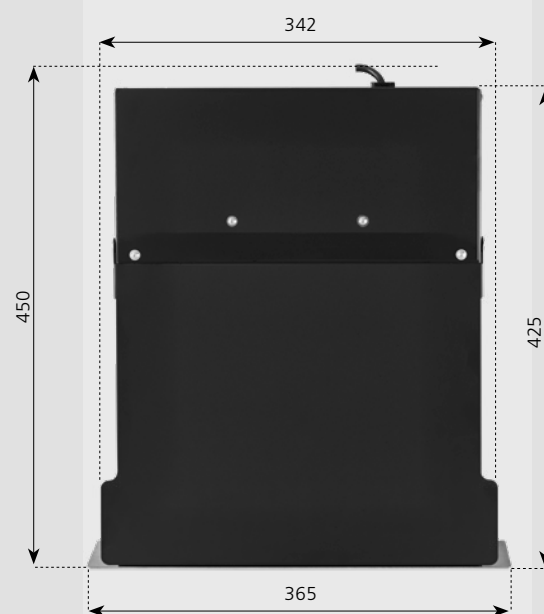
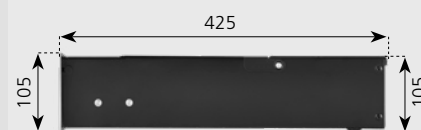
Built-in vacuum cleaner **BVC 10**, for front panel from 10 cm front panel height, can be retrofitted  
prerequisite: fitting space > 345 mm wide

- efficient 600 watt motor
- stainless steel finish
- activated by tapping the button
- quick cleaning without dragging a heavy conventional vacuum cleaner
- rapid dirt extraction
- extracts dirt up to 12 mm in diameter
- vacuum cleaner bags easy to change
- vacuum cleaner bag (with anti-allergen filters) included in scope of delivery

VDE/GS, CE

220-240 V, 600 W, 50/60 Hz

**optional:** set of tube, push-in nozzle, crevice nozzle and brush attachment





## Built-in hand blender **BHB 50**

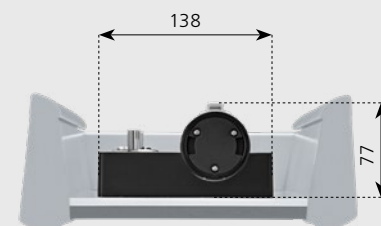
product	colour	dimensions incl. charging station/hand blender	weight	item no.
BHB 50	aluminum/black	h: 77 mm w: 138 mm d: 420 mm h: 67 mm w: 60 mm length: 420 mm	1,4 kg (incl. charging station) 1 kg (hand blender)	625.011

Built-in hand blender **BHB 50**, for drawers with cabinet width of 30 cm or more  
prerequisite: clear width drawer > 145 mm

- cordless, battery-operated hand blender
- charging station is firmly mounted in the drawer, can be removed toolless for cleaning
- LED battery level indicator
- four attachments made of stainless steel
  - universal cutter: standard attachment to blend most food items
  - whipping disk: to whip foods
  - stirring disk: to stir thick and creamy foods
  - cutting knife: to cut meat as well as fibrous fruits and vegetables
- three speed settings: approx. 12.000 rpm; 9.000 rpm; 6.000 rpm
- aluminum housing, ergonomic plastic handle
- two-finger switch-on safety system
- automatic safety shut-off in case of overload or overheating

TÜV-Rheinland/GS, CE

- plug-in power supply unit for charging station: input voltage 100-240 volt
- battery: 7.2 volt, lithium-ion-battery; 2.1 Ah



## Built-in toaster **BT 10**

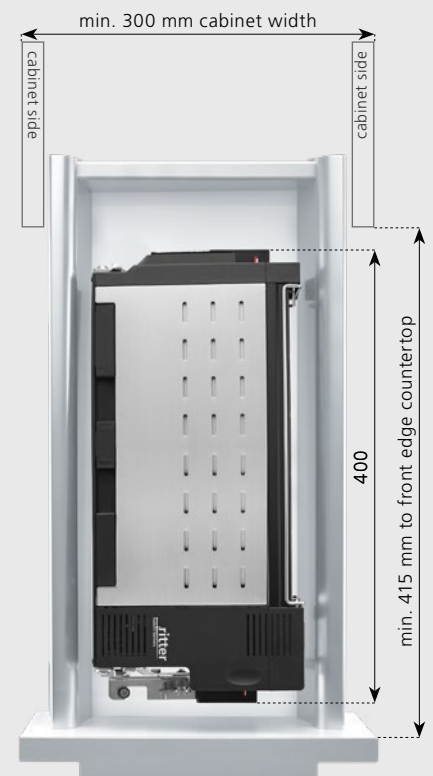
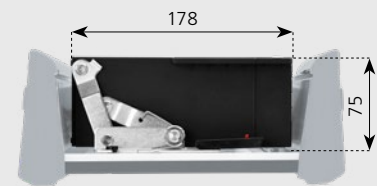
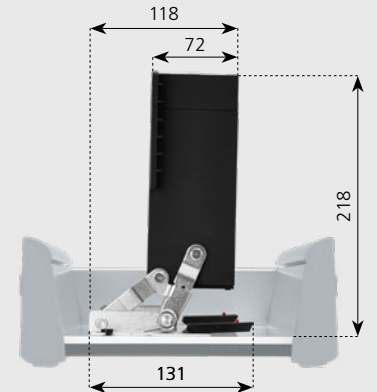
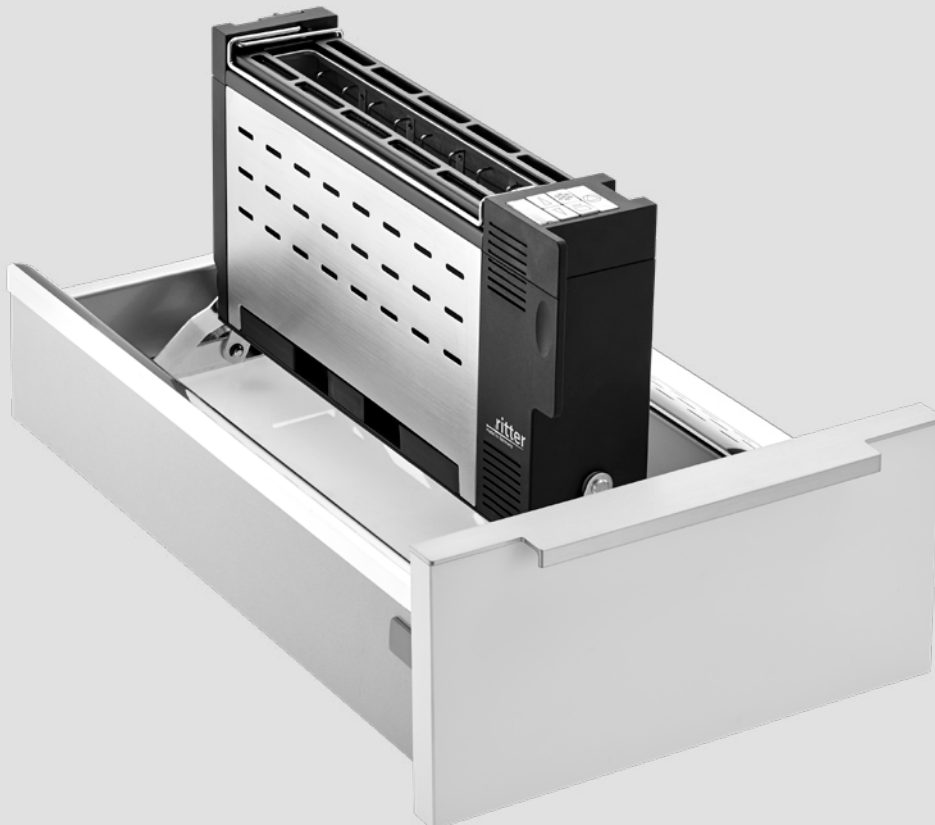
product	colour	dimensions (folded)	weight	item no.
BT 10	stainless steel/black	h: 75 mm w: 178 mm d: 400 mm	2 kg	620.001

Built-in toaster **BT 10**, for drawers with cabinet width of 30 cm or more  
prerequisite: clear width bottom of drawer > 180 mm,  
clear width top of drawer > 200 mm

- thermal insulated housing made of stainless steel
- set-up mechanism made of steel
- integrated bread and roll rack
- memory function of the toasting degree
- toasting degree with LED indication
- automatic toast food centering
- defrosting function
- reheating function
- automatic switch-off function when toast is jammed
- separate stop button to interrupt toasting
- crumb tray
- automatic switch-off function for safety when toaster is being folded

TÜV-Rheinland/GS, safety category 1, CE

220-240 volt, 850-950 watt



## Built-in food slicer **BFS 52 S**

product	colour	dimensions (folded, without food tray)	weight	item no.
BFS 52 S	silver metallic	h: 79 mm w: 195 mm d: 385 mm	4,3 kg	545.010

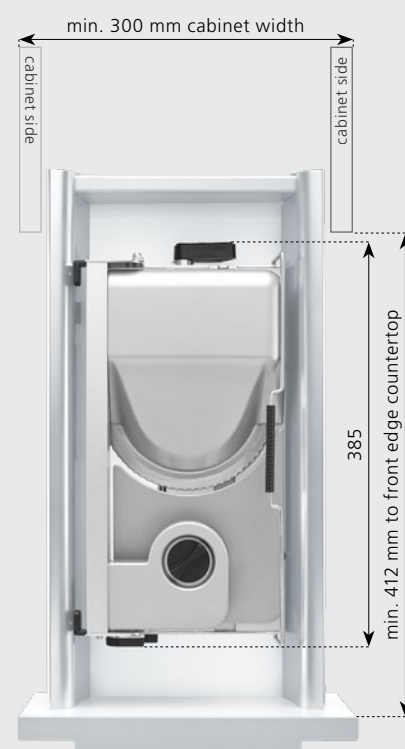
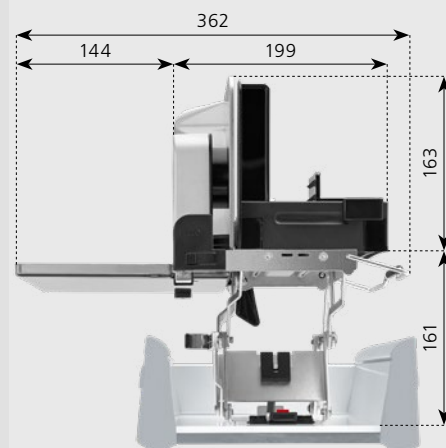
Built-in food slicer **BFS 52 S**, for drawers with cabinet width of 30 cm or more  
prerequisite: clear width drawer > 197 mm  
Distance bottom of drawer to top of worktop min. 116 mm, max. 161 mm

- food sliced from right to left
- metal construction
- serrated circular blade, 17 cm Ø
- slice thickness adjustable up to approx. 14 mm
- safety switch for intermittent and continuous operation
- automatic folding lock when slice thickness is set
- food tray
- folding up fixture locks automatically

VDE/GS, safety category 2, CE

230 volt, 65 watt, duty cycle 5 minutes

**optional:** smooth ham- and sausage circular blade



## Built-in food slicer **BFS 62 SL** and **BFS 62 SL-H\***

product	colour	dimensions (folded)	weight	item no.
BFS 62 SL	silver metallic	h: 75 mm w: 342 mm d: 365 mm	4,1 kg	544.017
BFS 62 SL-H	silver metallic	h: 75 mm w: 390 mm d: 365 mm	4,1 kg	544.018

Built-in food slicer **BFS 62 SL**, for drawers with 45 cm cabinet width or more  
prerequisite: clear width drawer > 344 mm

Distance bottom of drawer to top of worktop min. 116 mm, max. 161 mm

Built-in food slicer **BFS 62 SL-H**, for drawers with 50 cm cabinet width or more  
prerequisite: clear width drawer > 392 mm

Distance bottom of drawer to top of worktop min. 165 mm, max. 210 mm

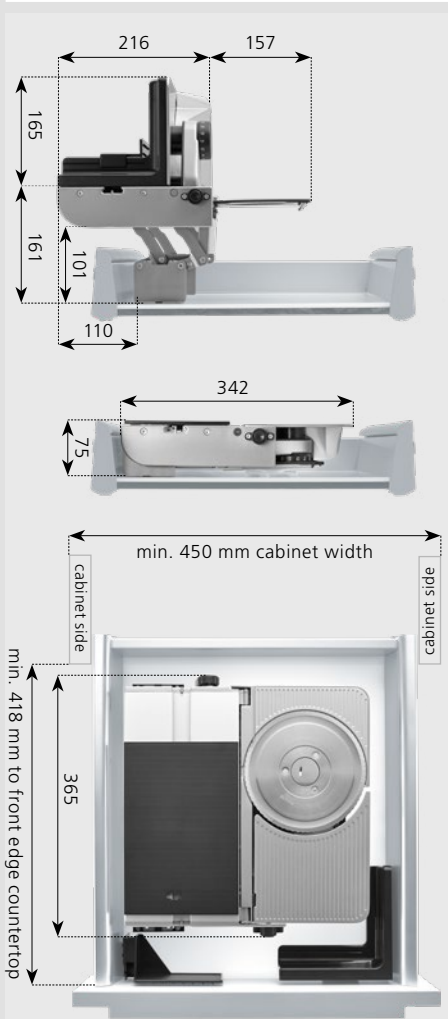
- food sliced from left to right
- metal construction
- serrated circular blade, 17 cm ø
- slice thickness adjustable up to approx. 14 mm
- safety switch for intermittent and continuous operation
- automatic folding lock when slice thickness is set
- food tray made of stainless steel
- holding device / bracket for finger protection and left-over holder
- folding up fixture locks automatically

VDE/GS, safety category 2, CE

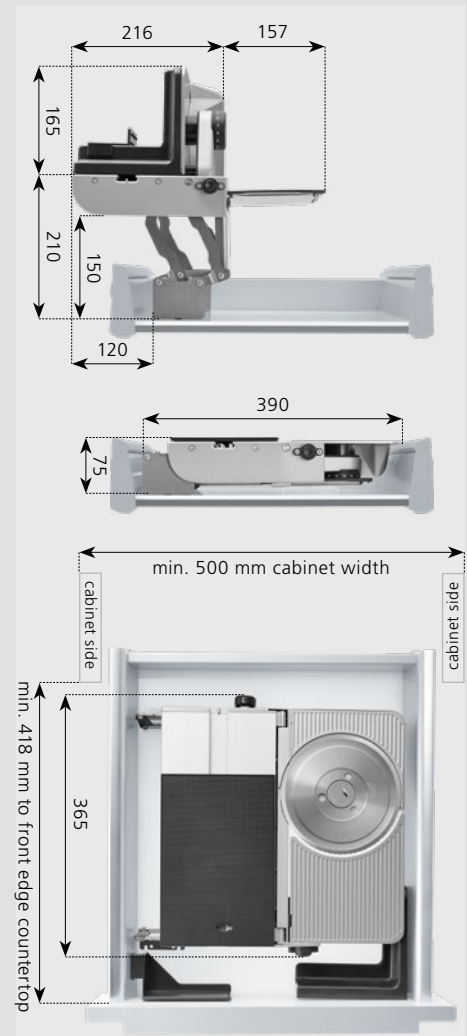
230 volt, 65 watt, duty cycle 5 minutes

**optional:** smooth ham- and sausage circular blade

\* Version with high mount e.g. for handleless kitchens, reinforced worktops etc.



**BFS 62 SL**



**BFS 62 SL-H**



## Built-in food slicer **BFS 62 SR** and **BFS 62 SR-H\***

product	colour	dimensions (folded)	weight	item no.
BFS 62 SR	silver metallic	h: 75 mm w: 342 mm d: 365 mm	4,1 kg	542.017
BFS 62 SR-H	silver metallic	h: 75 mm w: 390 mm d: 365 mm	4,1 kg	542.018

Built-in food slicer **BFS 62 SR**, for drawers with 45 cm cabinet width or more  
prerequisite: clear width drawer > 344 mm

Distance bottom of drawer to top of worktop min. 116 mm, max. 161 mm

Built-in food slicer **BFS 62 SR-H**, for drawers with 50 cm cabinet width or more  
prerequisite: clear width drawer > 392 mm

Distance bottom of drawer to top of worktop min. 165 mm, max. 210 mm

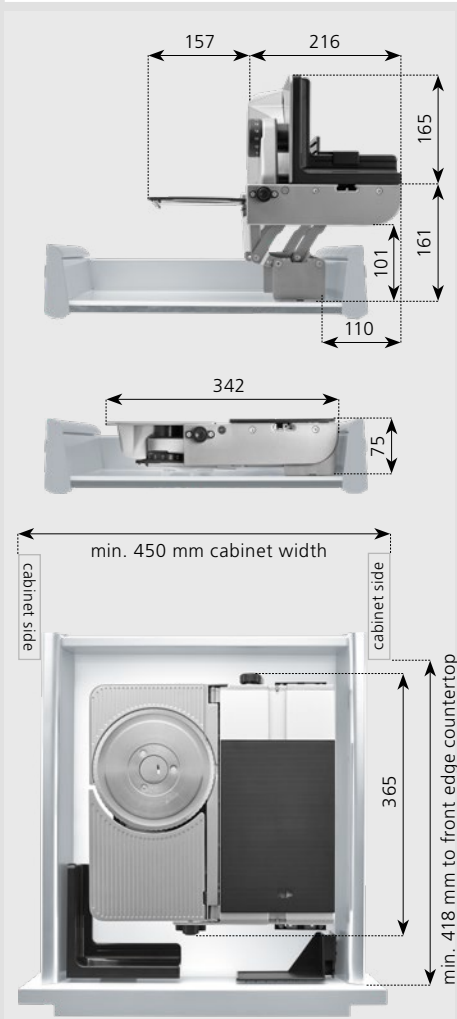
- food sliced from right to left
- metal construction
- serrated circular blade, 17 cm ø
- slice thickness adjustable up to approx. 14 mm
- safety switch for intermittent and continuous operation
- automatic folding lock when slice thickness is set
- food tray made of stainless steel
- holding device / bracket for finger protection and left-over holder
- folding up fixture locks automatically

VDE/GS, safety category 2, CE

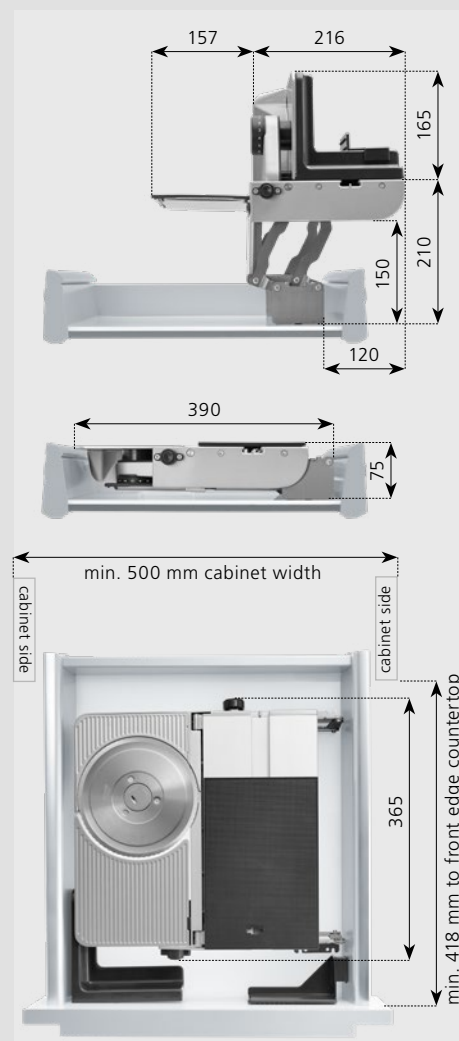
230 volt, 65 watt, duty cycle 5 minutes

**optional:** smooth ham- and sausage circular blade

\* Version with high mount e.g. for handleless kitchens, reinforced worktops etc.



**BFS 62 SR**



**BFS 62 SR-H**

## Built-in food slicer **BFS 72 SR** and **BFS 72 SR-H\***

product	colour	dimensions (folded)	weight	item no.
BFS 72 SR	silver metallic	h: 75 mm w: 342 mm d: 365 mm	4,3 kg	546.017
BFS 72 SR-H	silver metallic	h: 75 mm w: 390 mm d: 365 mm	4,3 kg	546.018

Built-in food slicer **BFS 72 SR**, for drawers with 45 cm cabinet width or more  
prerequisite: clear width drawer > 344 mm

Distance bottom of drawer to top of worktop min. 116 mm, max. 161 mm

Built-in food slicer **BFS 72 SR-H**, for drawers with 50 cm cabinet width or more  
prerequisite: clear width drawer > 392 mm

Distance bottom of drawer to top of worktop min. 165 mm, max. 210 mm

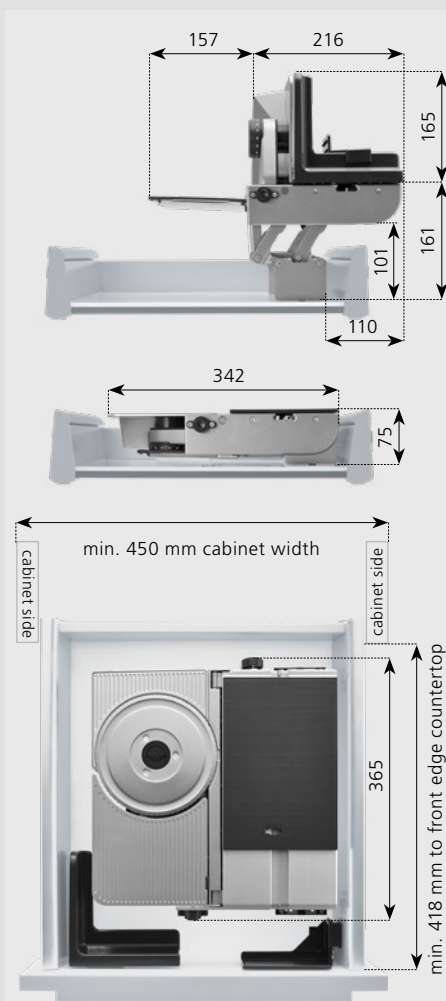
- food sliced from right to left
- full metal construction
- serrated circular blade with electropolished surface, 17 cm ø
- slice thickness adjustable up to approx. 14 mm
- two-finger switch-on safety system
- switch for intermittent and continuous operation
- automatic folding lock when slice thickness is set
- food tray made of stainless steel
- holding device / bracket for finger protection and left-over holder
- folding up fixture locks automatically

VDE/GS, safety category 2, CE

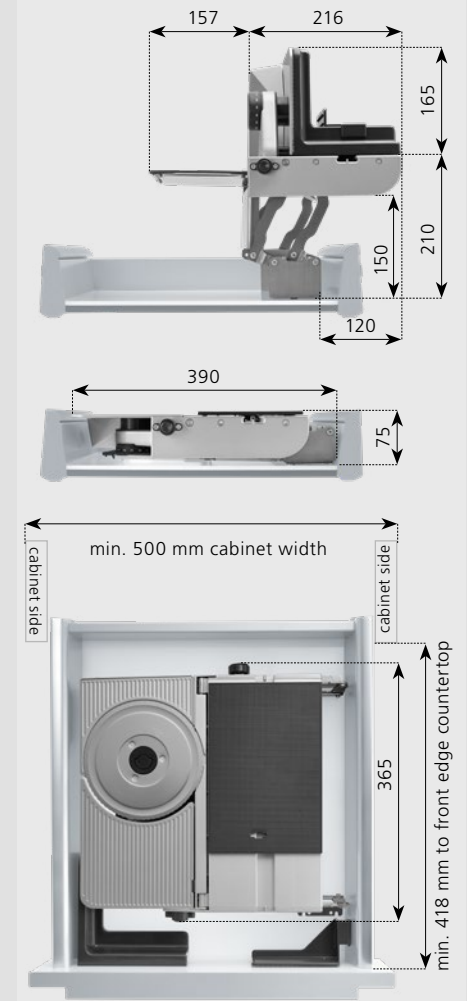
230 volt, 65 watt, duty cycle 5 minutes

**optional:** smooth ham- and sausage circular blade

\* Version with high mount e.g. for handleless kitchens, reinforced worktops etc.



**BFS 72 SR**



**BFS 72 SR-H**

## Built-in food slicer **E 118**<sup>Einbau</sup>

product	colour	dimensions	weight	item no.
E 118 <sup>Einbau</sup>	silver metallic	h: 210 mm w: 210 mm d: 335 mm	3,1 kg	508.009

Built-in food slicer **E 118**<sup>Einbau</sup>, for floor cabinets with 40 cm cabinet width or more

- for installation in swivel systems in floor cabinets
- food sliced from left to right
- metal construction
- serrated circular blade, 17 cm ø
- slice thickness adjustable up to approx. 14 mm
- safety switch for intermittent and continuous operation
- detachable carriage
- slicing carriage way approx. 15 cm
- food tray
- installation kit

VDE/GS, safety category 2, CE

230 volt, 65 watt, duty cycle 5 minutes

**optional:** smooth ham- and sausage circular blade



(Swivel mechanism not included in delivery contents)

## Built-in bread bin **EBT**

product	colour	fitting dimensions	weight	item no.
EBT	cream white	h: 225 mm w: 360 mm d: 460 mm	approx. 10 kg	600.015

Built-in bread bin **EBT**, for drawers with 40 cm cabinet width or more (with 16 mm cabinet wall thickness)

prerequisite: clear width drawer > 305 mm and clear height > 227 mm

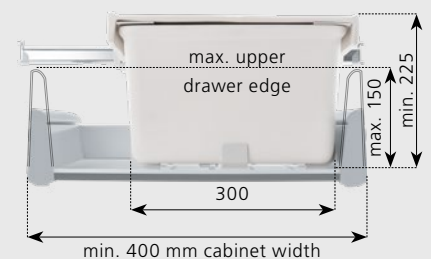
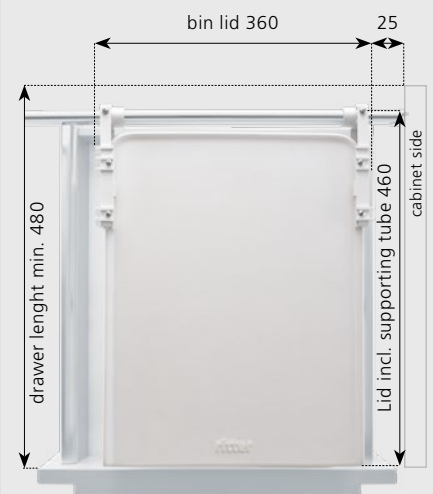
**Bread:** The ritter earthenware built-in bread bin with preserving lid ensures that the bread is being stored correctly. Here it experiences a significantly slower ageing process with complete development of the bread's own flavours.

**Water:** The bread's dissipated moisture is absorbed by the unglazed part of the earthenware lid and as the moisture level drops it returns to the bread. The food-safe glazing of the bread bin prevents the bread moisture from evaporating. Thus, the bread is being protected from early drying.

**Air:** Bread needs oxygen for its natural ageing process. The air holes on both sides of the bread bin enable the necessary air to circulate so that the bread does not „suffocate“.

**Temperature:** In order to keep the bread temperature at a constant level, the bread bin is made of earthenware. This material perfectly equalizes variations in temperature and therefore ensures that the bread is being stored biologically correct.

**optional:** supporting tube for cabinets wider than 60 cm





## Examples for **Built-in combinations**

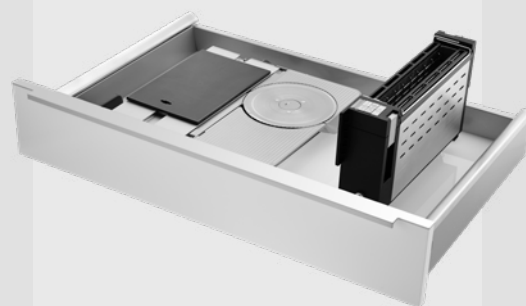
Built-in food slicer **BFS 62 SL** combined with built-in vacuum bleaner **BVC 10**  
installation in cabinet width min. 45 cm BFS 62 SL;  
installation in front panel from 10 cm BVC 10

- For technical details BFS 62 SL see page 28
- For technical details BVC 10 see page 24



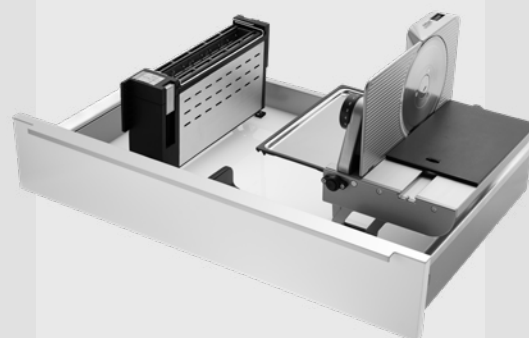
Built-in toaster **BT 10** combined with built-in food slicer **BFS 62 SL**  
installation in cabinet width min. 80 cm

- For technical details BT 10 see page 26
- For technical details BFS 62 SL see page 28



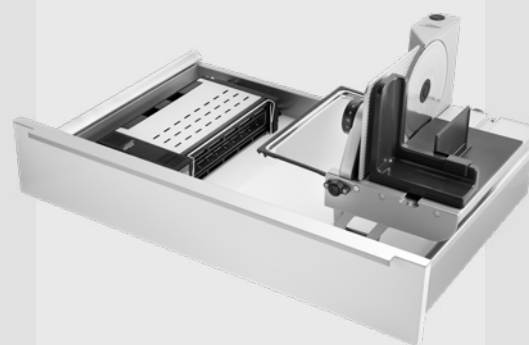
Built-in toaster **BT 10** combined with built-in food slicer **BFS 62 SR**  
installation in cabinet width min. 80 cm

- For technical details BT 10 see page 26
- For technical details BFS 62 SR see page 29



Built-in toaster **BT 10** combined with built-in food slicer **BFS 72 SR**  
installation in cabinet width min. 80 cm

- For technical details BT 10 see page 26
- For technical details BFS 72 SR see page 30



## Circular blades for the built-in food slicers

The slicing result highly depends on the polish, the shaping and the quality of the circular blade. Therefore, ritter does offer a variety of circular blades with different slicing features for perfect slicing. The serrated circular blade is well suited for all kinds of slicing. The smooth ham- and sausage circular blade does evenly cut off thin slices from soft food in particular.

### Circular blade made of stainless steel

The regular standard circular blade is suited for every-day use. The circular blade made of stainless steel is available as serrated circular blade and as smooth ham- and sausage circular blade.

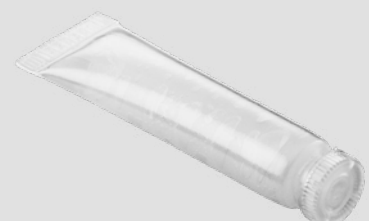


### Circular blade made of stainless steel with electropolished surface

The circular blade made of stainless steel has been polished electrolytically by a special procedure, resulting in an extremely smooth surface and even slicing edge. Thus, the slicing results get even more precise and the circular blade may be cleaned more easily. And in addition, the circular blade gains an elegant look of high polish. The electropolished circular blade is available as serrated circular blade and smooth ham- and sausage circular blade.

## Original ritter maintenance grease

The original ritter maintenance grease is suitable for all ritter food slicers. We recommend to occasionally regrease the gear wheels on the blade and the guiding of the slicing carriage.



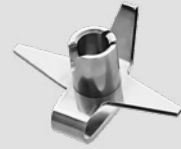
# Accessories

## Built-in hand blender attachments

The built-in hand blender allows the chopping, blending, whipping and mixing of many different food items. Depending on the desired result and consistency of the food items, ritter offers different attachments.

### Universal cutter

This multi-purpose knife is suitable to chop and blend most food items.



### Cutting knife

The cutting knife is especially suited to cut meat and fibrous fruits and vegetables such as asparagus, spinach or pineapple.



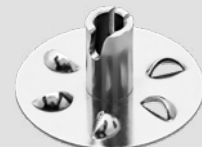
### Whipping disk

The whipping disk is used to whip creamy or fluffy food items such as cream or egg whites.



### Stirring disk

The stirring disk is suited to stir food items with a thick, creamy consistency such as mayonnaise, sauces or mashes.



## Optional accessory for built-in vacuum cleaner

To clean drawers and other hard-to-reach places, there are a push-in nozzle with tube and two different attachments (crevice nozzle and brush attachment) available.



ritterwerk, established by Franz Ritter in 1905, is a traditional Bavarian company that looks back with pride on more than 110 years of history. ritterwerk is a medium-sized company that develops and manufactures free-standing and built-in household appliances that help make routine kitchen tasks a little easier. The selected design stands for a selection of products with outstanding design.

Under the direction of our CEO, Michael Schüller, we design and manufacture our appliances here in Gröbenzell near Munich. ritterwerk has adopted "made in Germany" as its company philosophy. To us, this means much more than creating and protecting German jobs. It also means meeting the highest quality standards, choosing the right materials, and applying a functional design. In this way, we remain true to the Bauhaus tradition of the 1920s.

In the spirit of sustainability, we've installed a large photovoltaic power plant to make a positive contribution towards climate protection. And, we even go one step further by using ECO motors in our food slicers to save energy.

Acting responsibly at an economic, ecological and social level is part of the ritterwerk culture.



All ritter built-in food slicers are equipped with our 65-Watt Eco Motor. The high-quality ball bearing used for this motor is reducing the frictional losses significantly. This makes the 65-Watt Eco Motor not only economical and thus environmentally friendly, but also particularly powerful.



BT 10 has been awarded the environmental label **Blue Angel**. The eco-label is based on various environmental characteristics such as low power consumption and reducing of pollutant contents and emissions. Even so the conformity with strict safety requirements and easy user comfort are decisive factors for Blue Angel award.

ritterwerk GmbH  
Industriestraße 13  
82194 Gröbenzell  
Germany

Postfach 1264  
82180 Gröbenzell  
Germany

Phone: +49 (8142) 440 16-0  
Fax: +49 (8142) 440 16-70

[www.ritterwerk.com](http://www.ritterwerk.com)  
[info@ritterwerk.de](mailto:info@ritterwerk.de)  
[www.youtube.com/ritterwerk](http://www.youtube.com/ritterwerk)  
[www.facebook.com/ritterwerk](http://www.facebook.com/ritterwerk)

REACH-directive see:  
[www.ritterwerk.de/reach-en](http://www.ritterwerk.de/reach-en)